



**Friends of
the Earth**

Rewriting the rules ...

... for sustainable livestock
production & consumption



**Friends of
the Earth**

Brazil's soy harvest March 2008





**Friends of
the Earth**

Livestock's impacts - growing acceptance



“Livestock impacts on ecosystem goods and services are largely negative, through impacts such as deforestation, nutrient overloading, greenhouse gas emissions, nutrient depletion of grazing areas, dryland degradation from overgrazing, dust formation, and bush encroachment.”

Millennium Ecosystem Assessment, 2005



**Friends of
the Earth**

Livestock's impacts - growing acceptance

“Livestock’s contribution to environmental problems is on a massive scale”

Livestock’s long shadow,

UN Food and Agriculture Organisation, 2006

“Globally, livestock has a disproportionately large impact on the environment and on resource use”

Food: an analysis of the issues, Strategy Unit, 2008

“... a healthy, low-impact diet would contain less meat and fewer dairy products than we typically eat today”

Food Matters, Strategy Unit, 2008



**Friends of
the Earth**

Livestock's impacts



- **One of the main drivers of biodiversity loss in forests & other habitats - to make way for soy monocultures and pasture**
- **18% of global GHG emissions**
- **Communities - loss of land and livelihoods, pesticide impacts, labour abuses, pollution of soil and water**



**Friends of
the Earth**

Factory farming – dependant on soy



- **Soy provides cheap source of protein for animal feed**
- **Use has soared as a result of agricultural policy and since BSE**
- **Much soy grown in South America and imported into Europe is GM**
- **UK farmers affected by commodity price volatility**



**Friends of
the Earth**

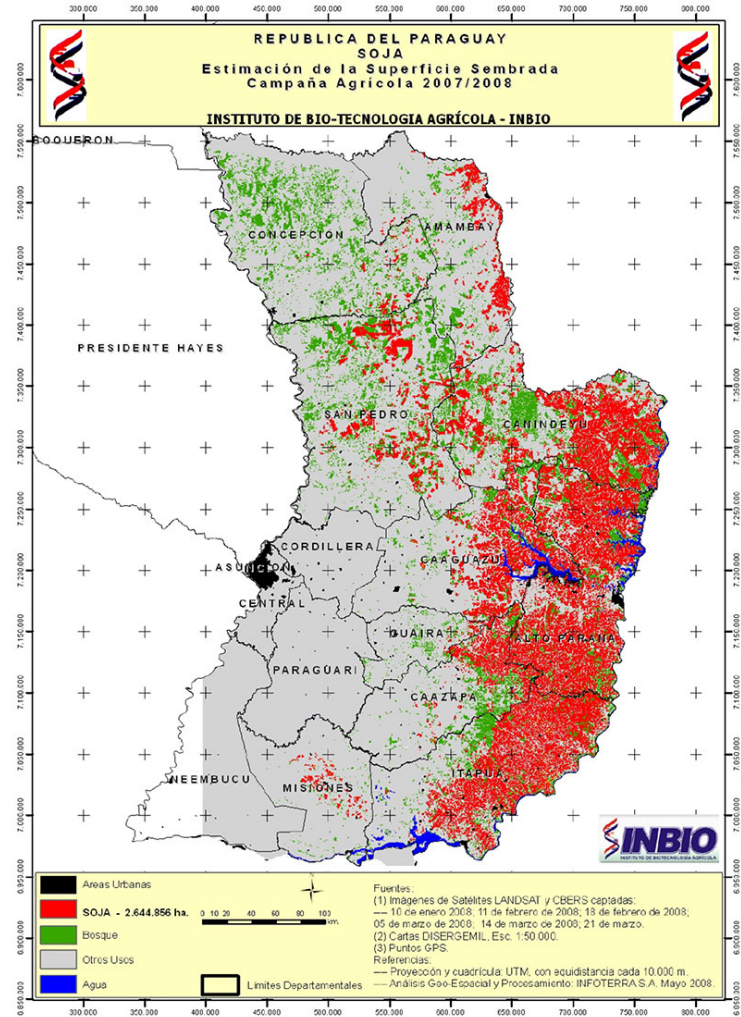
A vicious circle - soy expands to meet demand





Friends of the Earth

Soy expansion - Paraguay





**Friends of
the Earth**

The European market



- **The EU is the biggest market for South American soymeal**
- **A third of all Brazilian soy is exported to Europe**
- **An area the size of Hungary is needed to grow soy for the EU market (10M ha)**



**Friends of
the Earth**

Europe's land grab

- **Since 1996, the amount of land needed to produce soy for the European market is roughly equal to the area of deforestation in Brazilian forests**

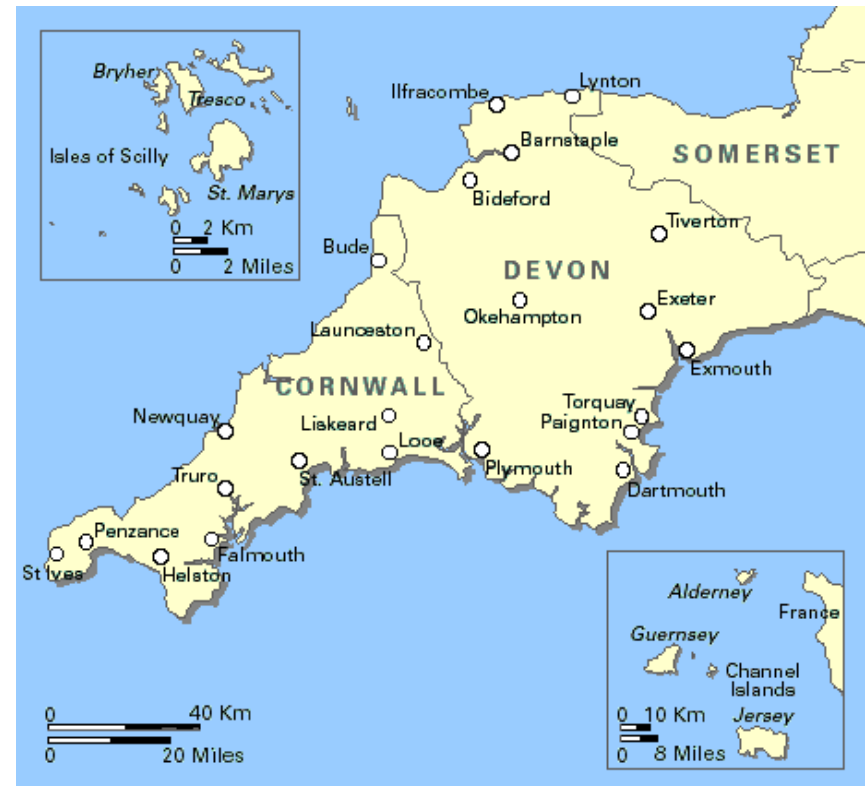




**Friends of
the Earth**

The UK's role

- **UK imported 1.7 MT soymeal; 650,000T soybeans from South America in 2007**
- **From an area of 1.2 million hectares = larger than Cornwall and Devon**





**Friends of
the Earth**

Friends of the Earth's *Food Chain* campaign

- **Public campaign for UK political action to address the impacts of livestock production**
- **Change the system - whilst maintaining a thriving & sustainable UK livestock sector**
- **Working with partners in South America**
- **Solutions in producing and consuming countries**



**Friends of
the Earth**

Solutions: 1 – Shift money



- **Shift subsidies away from intensive systems - including CAP**
- **Procurement: ensure public money is not spent on damaging, unhealthy food (£2.2 billion per year)**
- **Fund research into alternative feeds, breeds, crop varieties and cropping systems**
- **Change public investment policy**



**Friends of
the Earth**

Solutions: 2 – Reform policy



- **Climate change - secure international agreement to reduce forest loss from agricultural expansion**
- **Review EU trade policy - prioritise environmental & social impacts of global trade**
- **UK competition policy – supermarkets watchdog**
- **Commission for Business, Human Rights and the Environment**